

# NOTES:

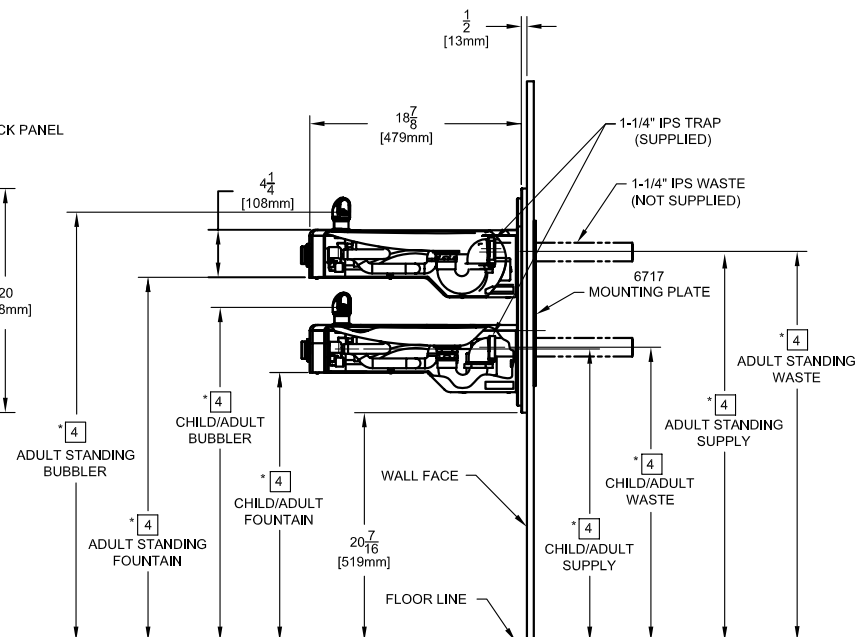
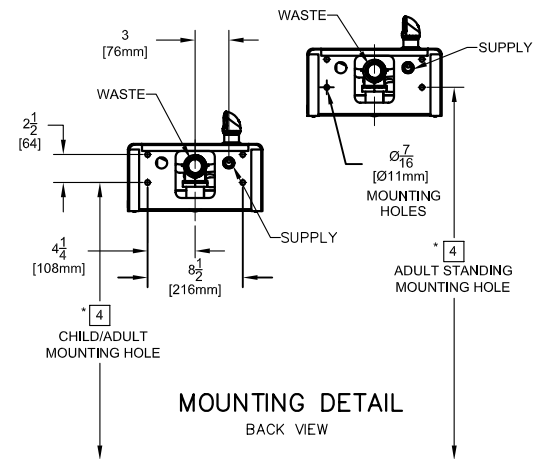
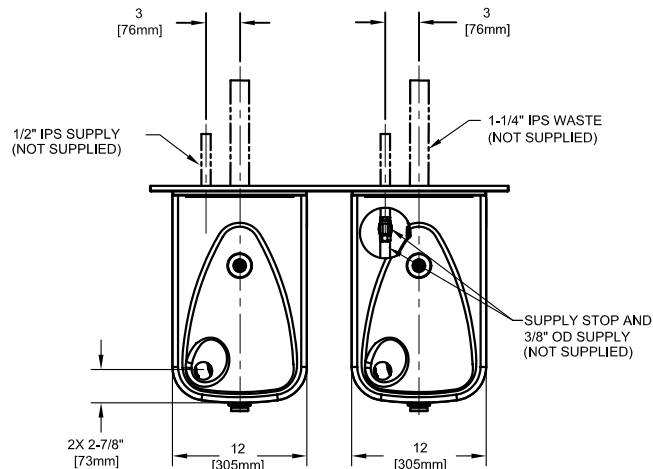
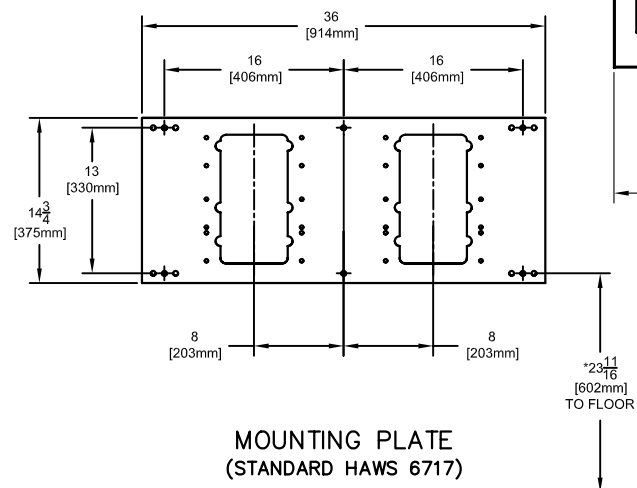
- HOLD ROUGH-IN DIMENSIONS  $\pm \frac{1}{8}$ " (3.2MM).
- WHEN INSTALLING THIS UNIT, LOCAL, STATE, OR FEDERAL CODES SHOULD BE ADHERED TO. FOR INSTALLATION HEIGHTS OTHER THAN SHOWN, DIMENSIONS MARKED (\*) MUST BE ADJUSTED ACCORDINGLY.
- REFER TO 5874/VRK5874 OPERATION AND MAINTENANCE MANUAL FOR PUSH BUTTON AND VALVE INSTALLATION/MAINTENANCE INSTRUCTIONS.
- ROUGH IN DIMENSIONS FOR FOUNTAIN HEIGHTS:
 

CHILD WHEELCHAIR HEIGHT: SEE SHT 2 FIG 1  
 WASTE: 26-1/4" (667mm)  
 SUPPLY: 26-1/8" (664mm)  
 MOUNTING HOLE: 24-13/16" (630mm)  
 FOUNTAIN: 24" (610mm)  
 BUBBLER: 29-7/8" (756mm)

ADULT WHEELCHAIR HEIGHT: SEE SHT 2 FIG 2  
 WASTE: 29-1/4" (743mm)  
 SUPPLY: 29-1/8" (740mm)  
 MOUNTING HOLE: 27-13/16" (706mm)  
 FOUNTAIN: 27" (686mm)  
 BUBBLER: 32-7/8" (832mm)

STANDING ADULT HEIGHT: SEE SHT 2 FIG 3  
 WASTE: 34-3/4" (883mm)  
 SUPPLY: 34-5/8" (879mm)  
 MOUNTING HOLE: 33-5/16" (846mm)  
 FOUNTAIN: 32-1/5" (826mm)  
 BUBBLER: 38-3/8" (972mm)
- REFER TO MODEL 1117L INSTALLATION DRAWING SHEET 2 OF 2 (ON HAWS WEBSITE [WWW.HAWSCO.COM](http://WWW.HAWSCO.COM)) FOR PERMISSIBLE BOWL MOUNTING PATTERNS. TWO WHEELCHAIR HEIGHT FOUNTAINS CANNOT BE MOUNTED SIDE BY SIDE PER ANSI A117.1.

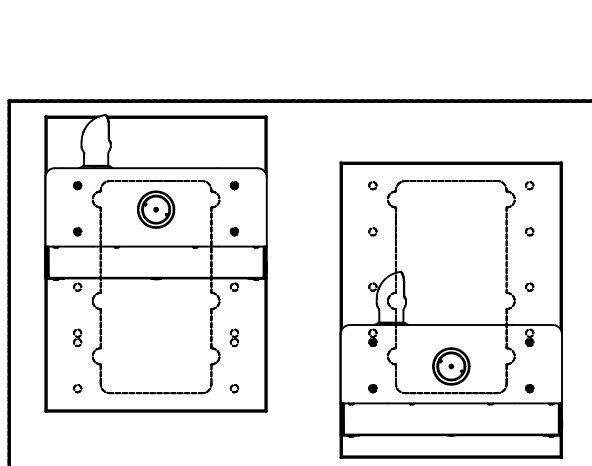
NOTES CONTINUED ON SHEET 2 OF 2



		1455 KLEPPE LANE SPARKS, NEVADA 89431 (775) 359-4712 FAX (775) 359-7424 E-MAIL: <a href="mailto:HAWS@HAWS.CO.COM">HAWS@HAWS.CO.COM</a> WEBSITE: <a href="http://WWW.HAWSCO.COM">WWW.HAWSCO.COM</a>	
ECN NO. 4603 DATE: 10/06 APPROVED: C. FENNER	REVISED PER: HM DATE: 10/06 DATE:	MODEL(S) 1117L	PART NUMBER 0002080223.D DRAWING NO. 15269A00 REV 11
SCALE: 1:1		DRAWING TYPE: INSTALLATION	SIZE: A SHEET 1 OF 2

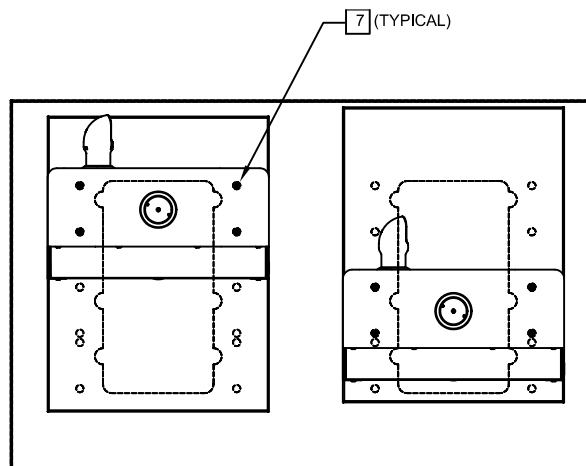
NOTES:

6. FIGURES 1 AND 2 ARE REVERSIBLE. CAN BE RIGHT OR LEFT SIDE HIGH.
7. USE SHADED HOLES TO MOUNT AT INDICATED POSITIONS BASED ON COMBINATION  
SELECTED (FIGS. 1 THRU 3).
8. REFER TO SHEET 1 OF 2 NOTE 4 FOR INSTALLED FOUNTAIN DIMENSIONS.



6  
FIGURE 1.

ADULT STANDING/CHILD WHEELCHAIR



6  
FIGURE 2.

ADULT STANDING/ADULT WHEELCHAIR

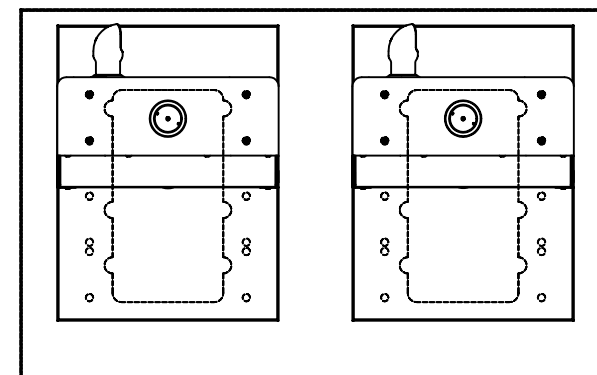



FIGURE 3.

ADULT STANDING/ADULT STANDING

## BOWL MOUNTING PATTERNS

		<b>Haws®</b>		1455 KLEPPE LANE SPARKS, NEVADA 89431 (775) 359-4712 FAX (775) 359-7424 E-MAIL: HAWS@HAWS.CO.COM WEBSITE: WWW.HAWS.CO.COM	
ECN NO.	REVISED PER	BY:	MODEL(S)	PART NUMBER	
	ECN: 4603	HM		0002080223.D	
DRAWN:	DATE:	CHKD:		DRAWING NO.	REV
C. FENNER	12/29/06		1117L	15269A00	11
APPROVED:	DATE:		SCALE: 1:1	DRAWING TYPE:	INSTALLATION
				SIZE: A	SHEET 2 OF 2